

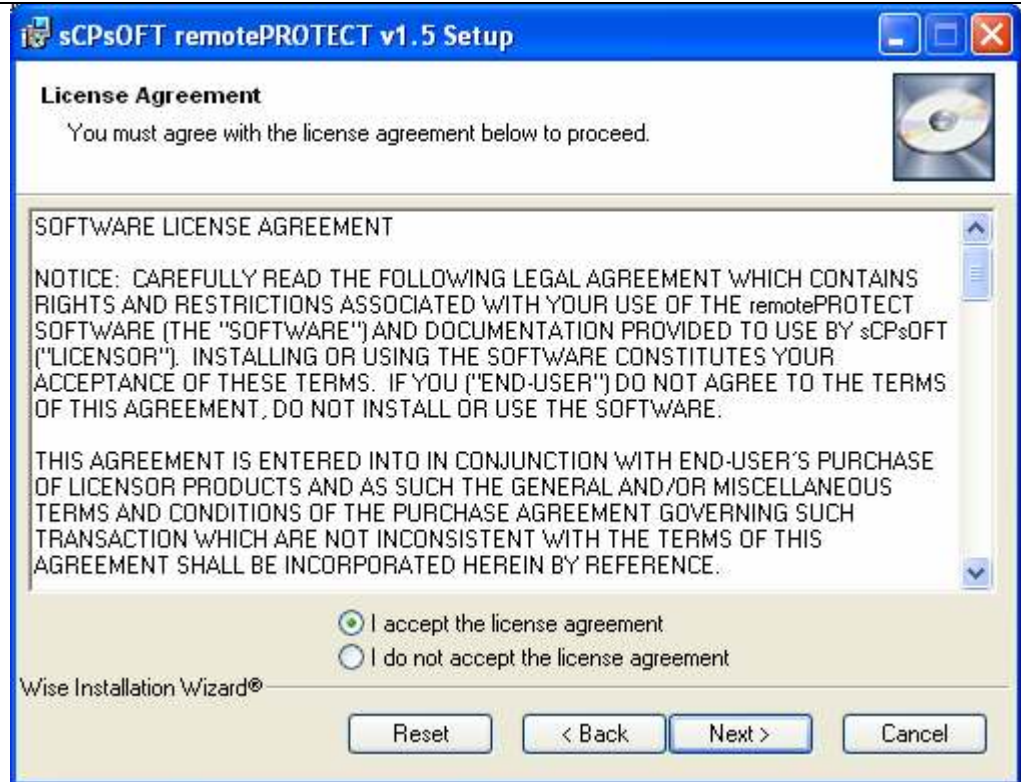
sCPsOFT remotePROTECT v1.5 – Install and User Guide

Prerequisites:

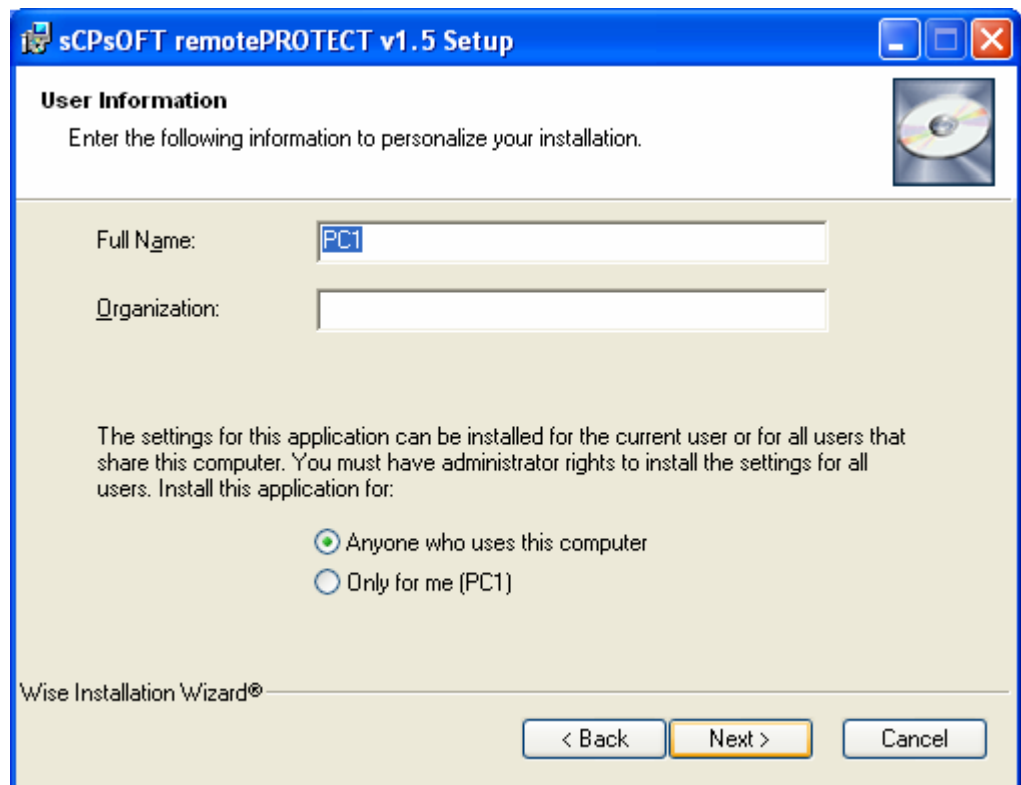
- The device must be connected to Microsoft Active Synchronizer.
- The Phone on the device must be switched on and functional.

Install to PC

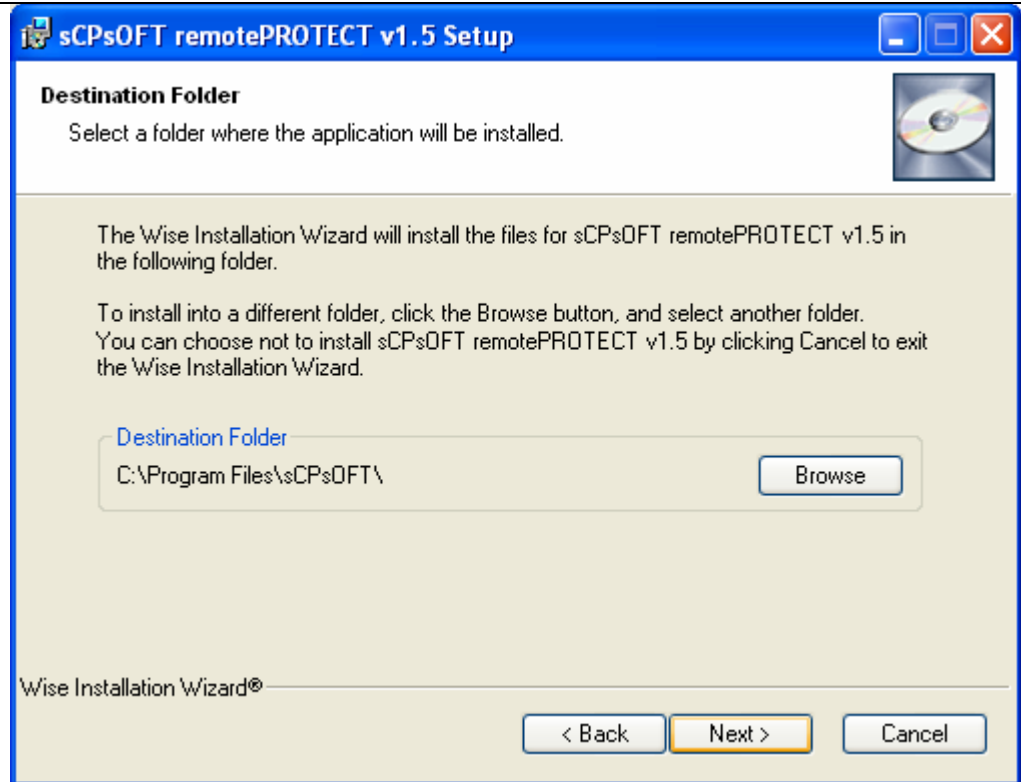
Summary	Detailed Step
<p>Run remotePROTECT v1.5.exe</p>	<p>Once downloaded double click remotePROTECT v1.5.exe or remotePROTECT v1.5 Demo.exe for the DEMO</p>  <p>1. Click Next to continue.</p>



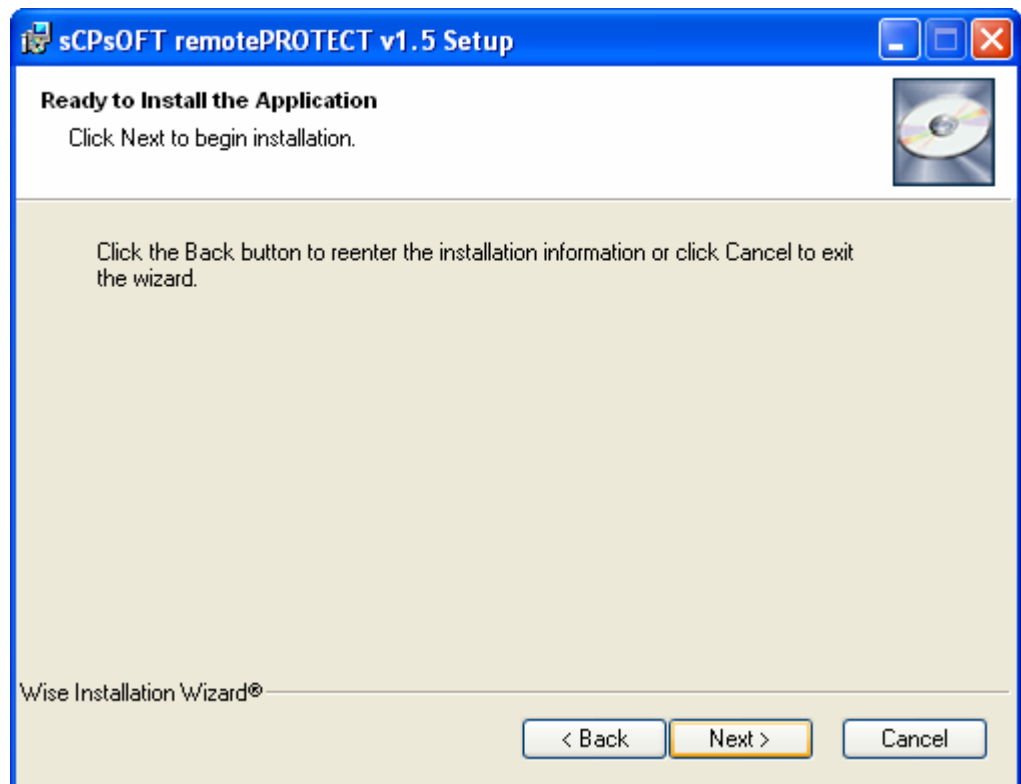
2. Read the license and accept the agreement before clicking Next



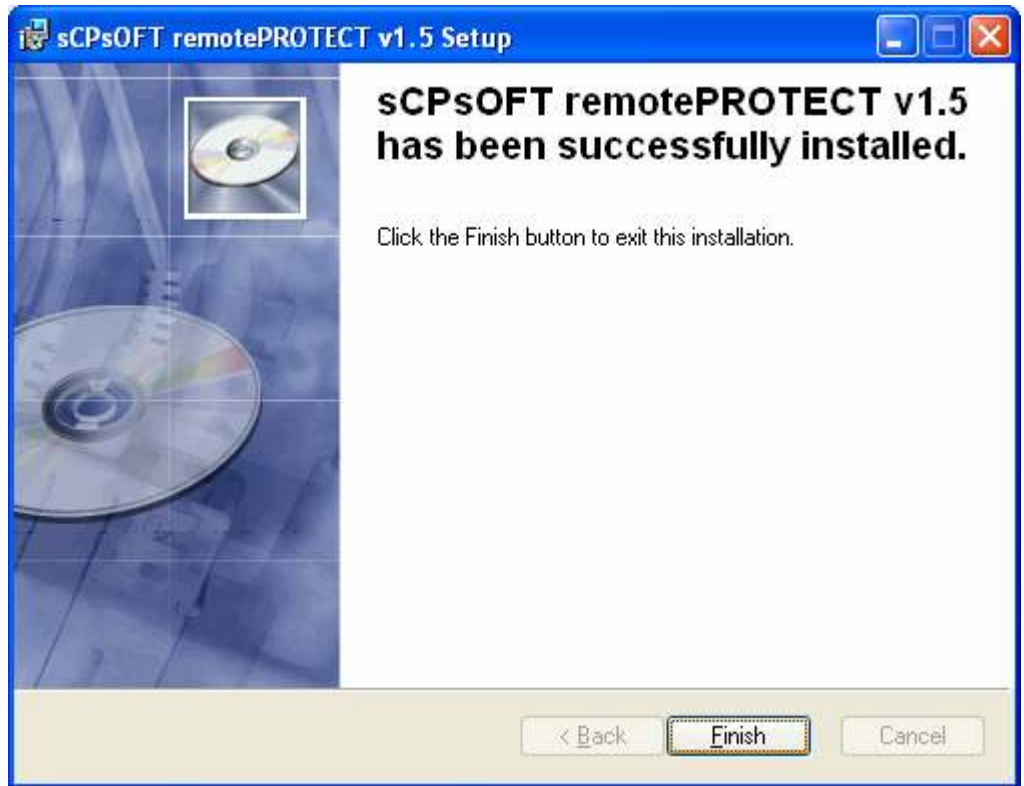
3. Enter the name and organisation and click Next.



4. Ensure this path is preserved for the software to run correctly, click Next.



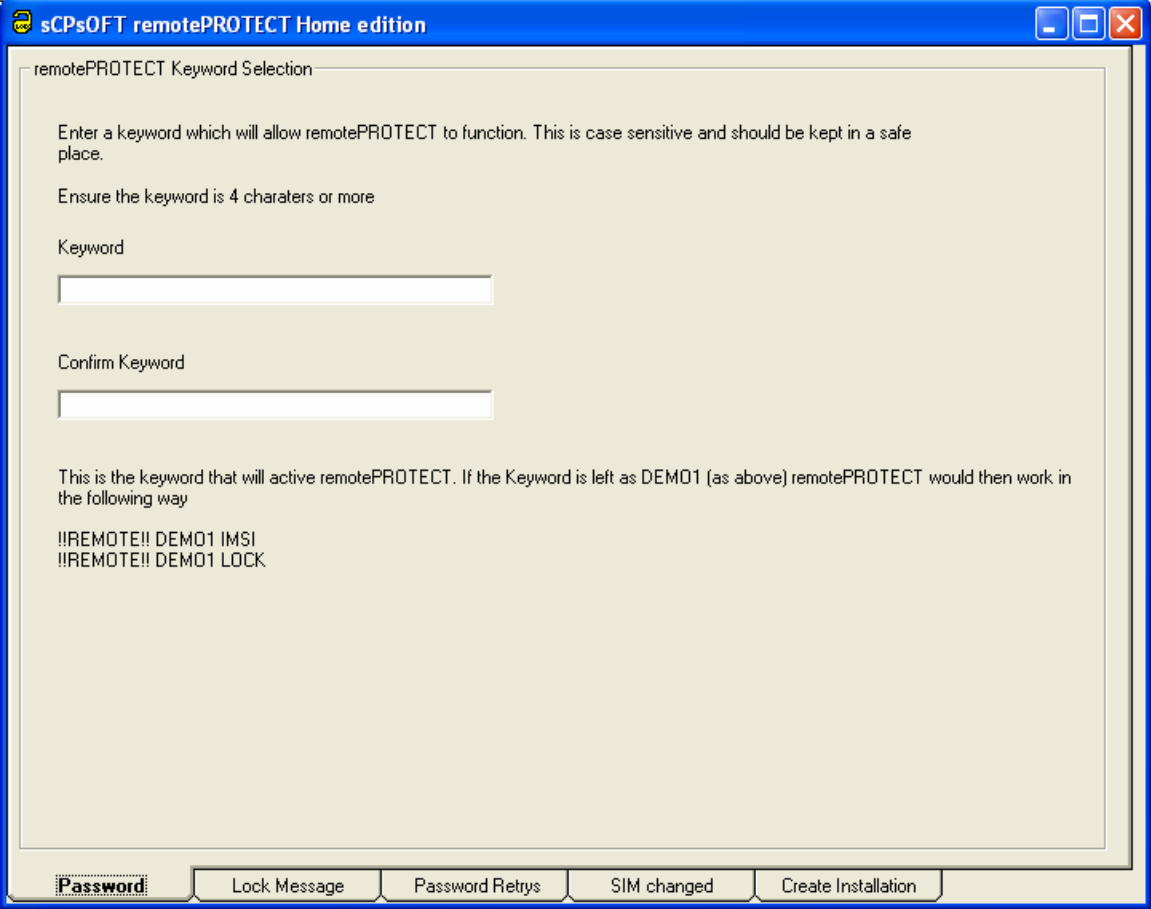
5. Click Next to begin the installation.

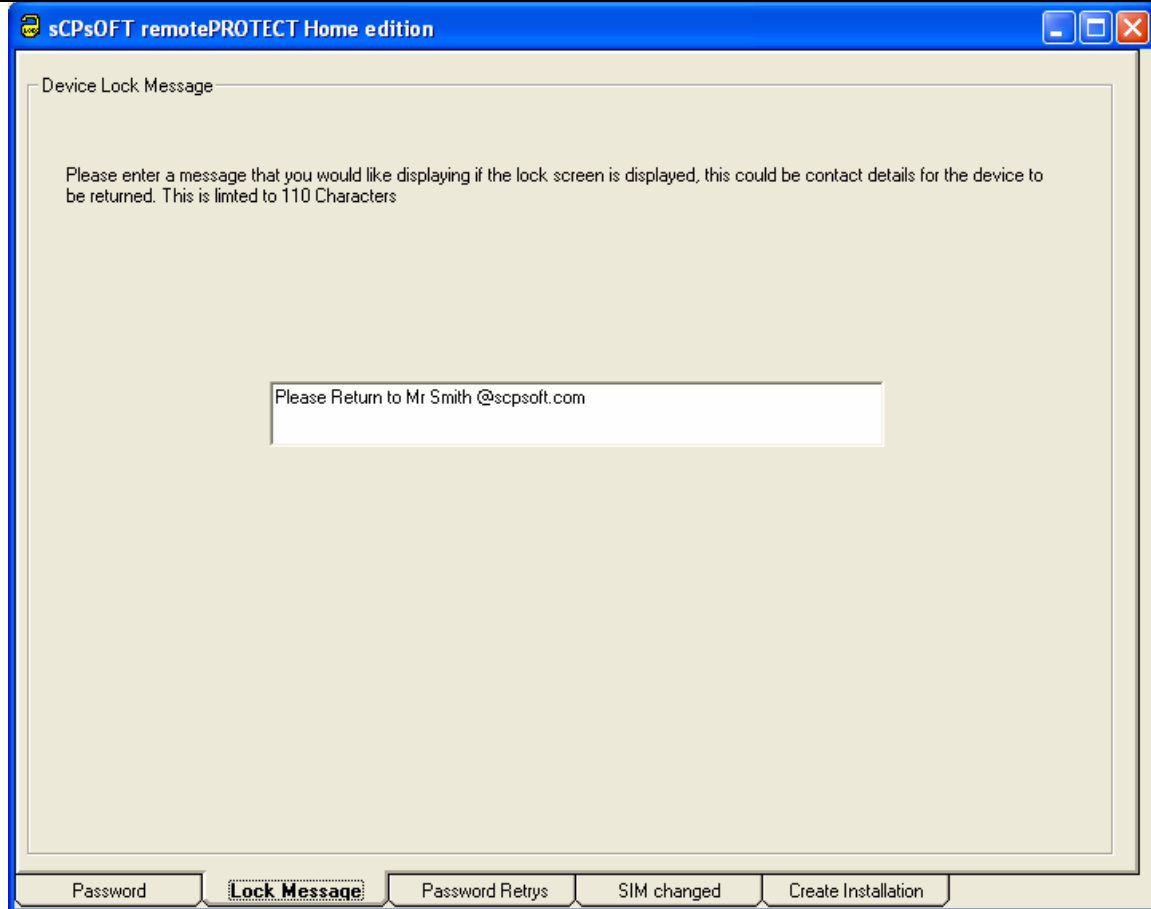


6. Click Finish to complete the install.

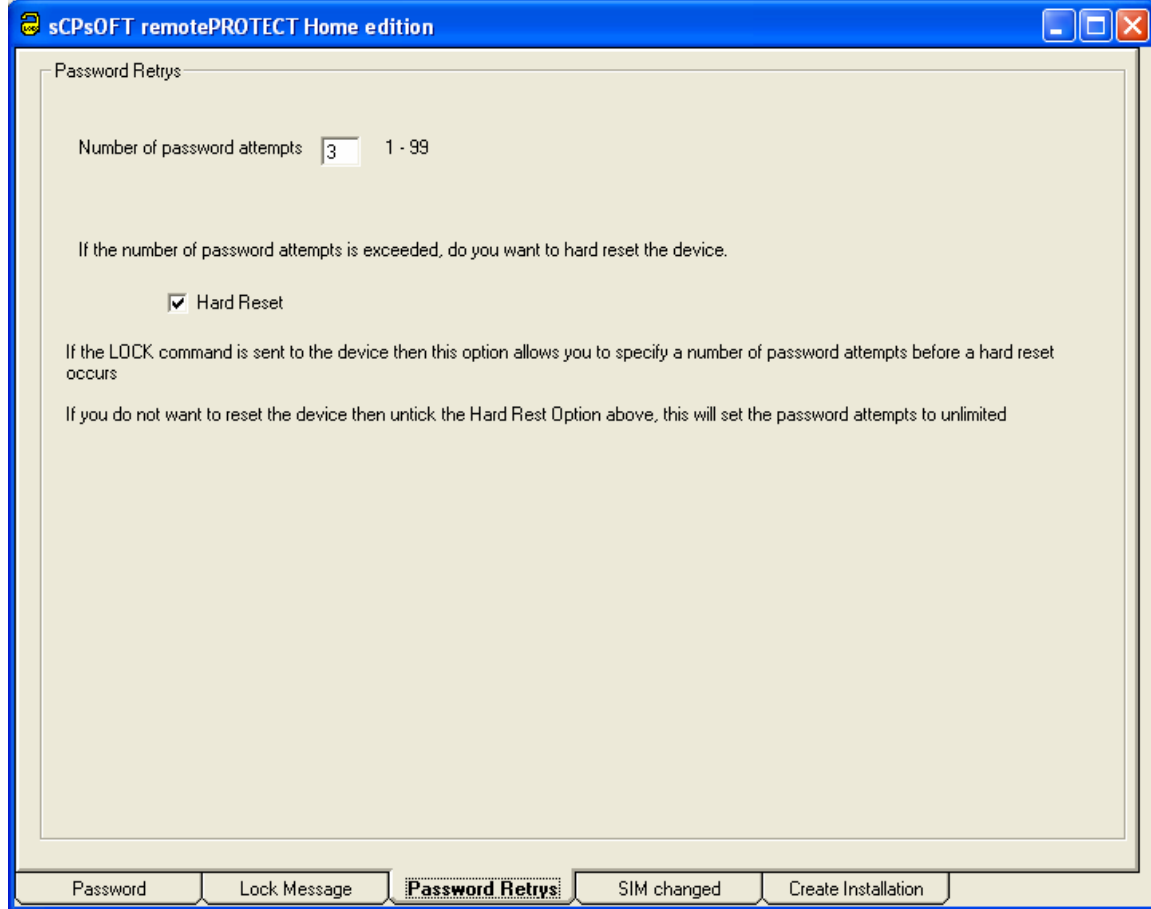
Install to device

The software can be started by clicking Start, Programs, sCPsOFT, remotePROTECT v1.5

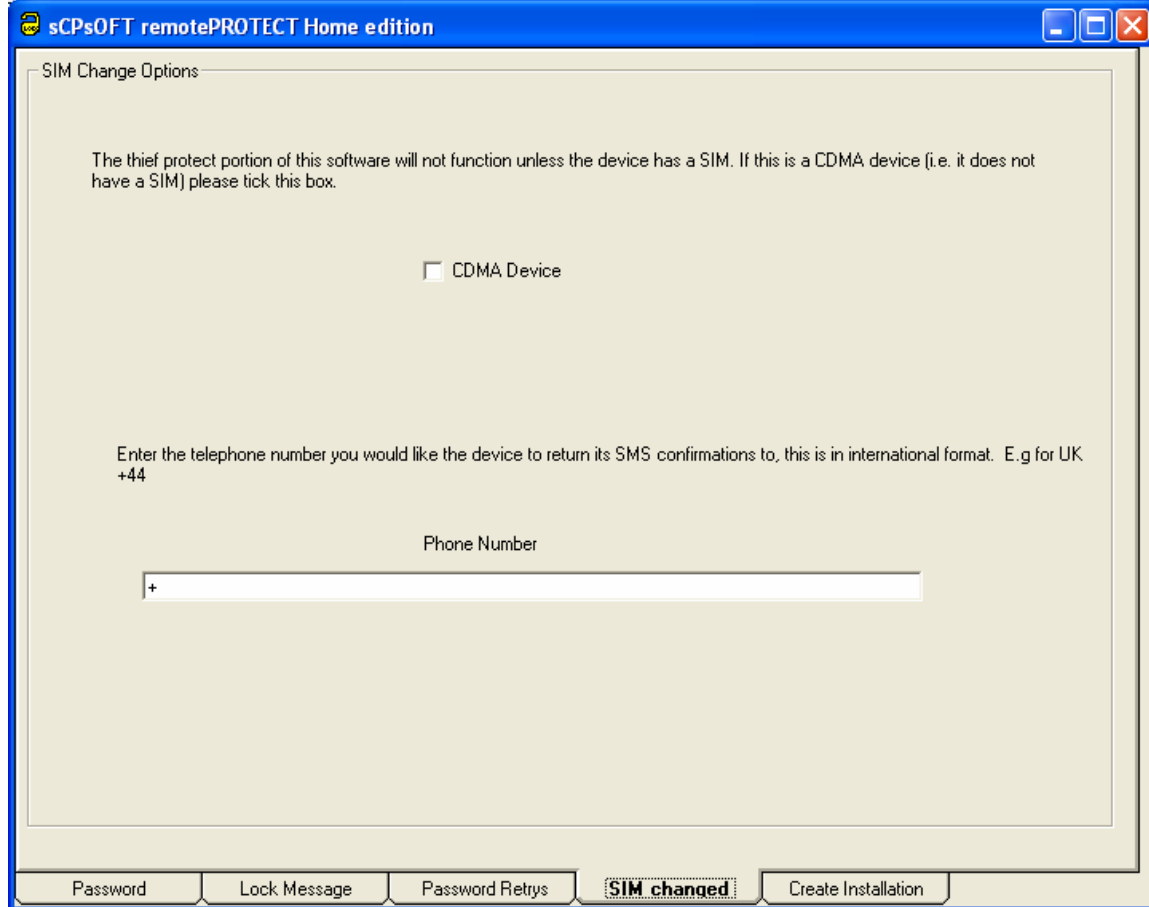
Summary	Detailed Step
<p>Run remotePROTECT Setup demo.exe</p>	<p>7. Once downloaded double click remotePROTECTH.exe</p>  <p>8. Enter the Keyword that will activate remotePROTECT</p>



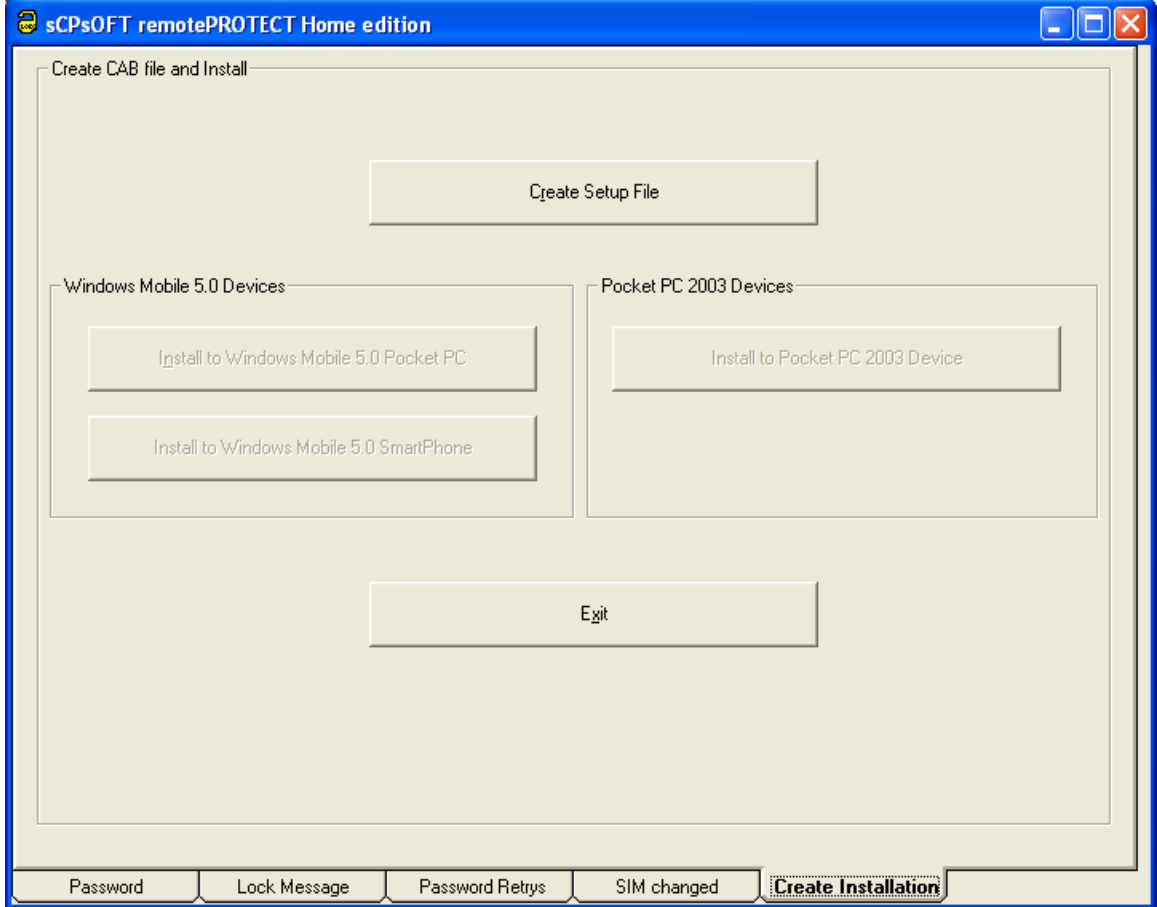
9. Enter the message you want to appear when the device is locked, if you 'KILL' the device this will also be displayed after the device has been wiped.



10. Enter the password retires you would like on the LOCK screen, if the hard reset option is not selected then the number of retires will be unlimited.

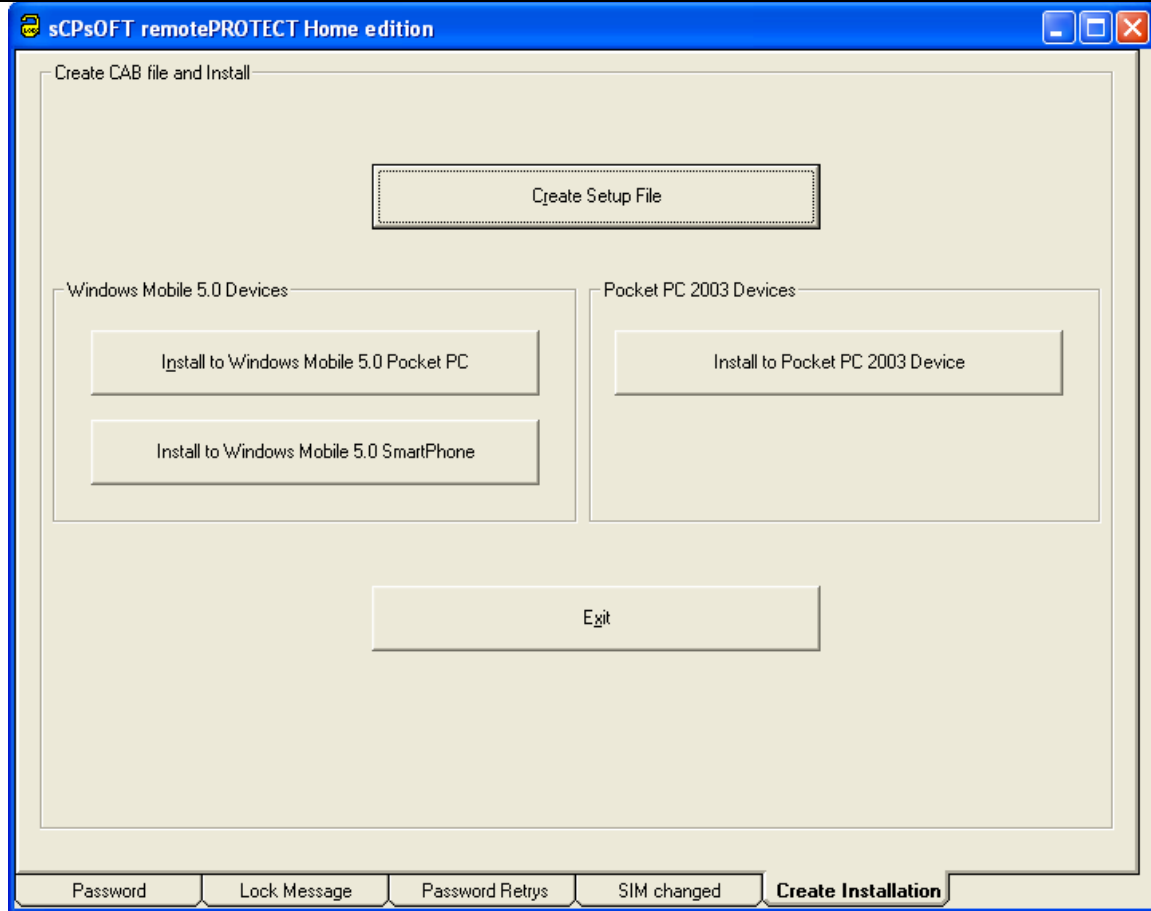


11. Enter the telephone number you want to be informed of if the device is stolen , this number will also receive all confirmation SMS sent from the device after it receives a command. This number is in International format.



12. Ensure the device is connected by active synch , click 'Create Setup File'

This will create a text file with the information you have supplied and copy this file to the device.



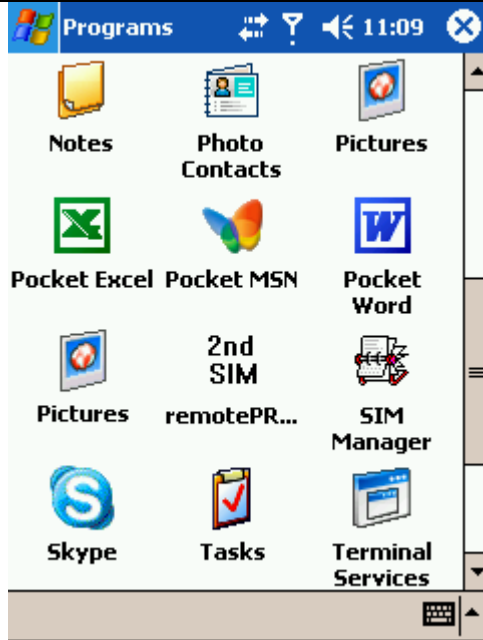
13. Click on the device type you require and follow the instructions below.

Summary	Detailed Step
Install to PDA	<p data-bbox="467 310 1312 340">NOTE: Ensure that the install is done to DEVICE and not the storage card or storage area.</p> <div data-bbox="511 394 1339 604" style="border: 1px solid blue; padding: 5px;"> <p data-bbox="522 405 799 436">Installing Applications ✕</p> <p data-bbox="544 468 1323 497">Install "sCPsOFT RemotePROTECT" using the default application install directory?</p> <p data-bbox="690 531 1161 573"> <input data-bbox="690 531 836 573" type="button" value="Yes"/> <input data-bbox="852 531 998 573" type="button" value="No"/> <input data-bbox="1015 531 1161 573" type="button" value="Cancel"/> </p> </div> <p data-bbox="511 630 646 655">1. Click Yes</p> <div data-bbox="467 682 1550 892" style="border: 1px solid blue; padding: 5px;"> <p data-bbox="479 693 906 724">Application Downloading Complete ✕</p> <p data-bbox="500 756 1534 785">Please check your mobile device screen to see if additional steps are necessary to complete this installation.</p> <p data-bbox="933 819 1079 861" style="text-align: center;"> <input data-bbox="933 819 1079 861" type="button" value="OK"/> </p> </div>

Second SIM

If you use a second SIM, then follow the bellow instructions.

Summary	Detailed Step
Tap remotePROTECT from the Programs menu	<ol data-bbox="467 1260 1550 1339" style="list-style-type: none"> 1. First put the second SIM into the device and switch on, it will now LOCK so enter the password to gain access to the device. 2. Tap Start, Programs, 2nd SIM





3. Enter the password and tap 'Enter Password'



4. The update is complete

Removing remotePROTECT

Summary	Detailed Step
Remove remotePROTECT	<ol style="list-style-type: none"><li data-bbox="467 405 927 432">1. Tap Start, Settings, and tap the System tab <li data-bbox="467 1117 732 1144">2. Tap Remove Programs <li data-bbox="467 1829 1013 1856">3. Highlight sCPSOFT remotePROTECT and tap Remove

Remove Programs

Remove Program



The selected program will be permanently removed. You may reload it from your desktop computer. Are you sure you want to remove it?

Yes No

Remove

Total storage memory available: 51652k

Adjust [memory](#) allocation.



4. Tap Yes

Remove Programs

Programs in storage memory

sCPsOFT RemotePROTECT

If you continue you will need to know your uninstall password

Continue?

OK Cancel

Remove

Total storage memory available: 50024k

Adjust [memory](#) allocation.



5. Tap OK



6. Enter the Keyword and tap Enter Password.



7. Tap OK, Once the device has reset follow the instructions from step 1.



Using remotePROTECT

Note: After a soft reset remotePROTECT will need to access the SIM card to ensure it is valid, if you have set a PIN on the SIM and don't enter this then the device will lock after 4 minutes of activity.

In order to use remotePROTECT a text message must be sent to a device with remotePROTECT installed.

All text messages to the device must start !!REMOTE!! <keyword> <command>, the table below describes the commands.

The device will not display any of the SMS messages that are sent using the below parameters, this is so the owner does not know you are interrogating the device.

Command	Result
!!REMOTE!! <keyword> TEST	<p>This will send a test message to :</p> <ul style="list-style-type: none"> The telephone that the TEST messages originated from The telephone number specified in SIM Changed. <p>This function enables you to test the configuration settings.</p>
!!REMOTE!! <keyword> IMSI	Sends the IMSI of the device to the predefined telephone number
!!REMOTE!! < keyword > IMEI	Sends the IMEI of the device to the predefined telephone number
!!REMOTE!! < keyword > LOCK	<p>Locks the device with the following screen</p>   <p>If the user knows the password then they can unlock the device. Sends a notification back to the predefined number that the device is locked.</p>
!!REMOTE!! < keyword > UNLK	If the device is currently locked then this will unlock the device. Send a notification back to the predefined informing of successful command.
!!REMOTE!! < keyword > KILL	Performs a HARD reset It will delete ALL information on the SD card. USE WITH CAUTION. Send a notification back to the predefined number informing of successful command.
!!REMOTE!! <keyword> WIPE	Wipes the SD card ONLY, sends notification back to the

	predefined number.
!!REMOTE!! <keyword> BATT	Sends the % of Battery life available to the predefined number.

Examples

The device has been set up with the password of **DEMO1**

```
!!REMOTE!! DEMO1 IMSI
!!REMOTE!! DEMO1 LOCK
```

If the SIM in the device is changed then a message will be sent to the telephone number defined in SIM Change, this will also lock the device. The message will contain the IMEI and IMSI numbers of the device, if the telephone is shown then a KILL command can be sent to the device wiping the contents.

Manual install

To complete a manual install you will need to create a setup file to be used by the installation and example setup file is below: Note the -> after each line is information only and should not be added to the file otherwise unforeseen errors will occur.

```
kill=yes -> This can be yes or no , if the number if retries has been exceeded should the device complete a full device wipe
times=3 -> Number of password retries
timest=3 -> Same as the number of retries
Search=DEMO1 -> Keyword / Password
LockM=Please Return to Mr Smith @scpsoft.com -> The message to be displayed at the LOCK screen.
```

```
CDMA=istrue -> This can be istrue or notrue , used to tell if the device is a CDMA device or not.
cp=+447770999999 -> telephone number to return remotePROTECT requests to. Must be in International format.
pn=+447770999999 -> same as above
```

This file must be called setupUE.txt and placed in the root of the device in order for the install to pick this file up.

Advanced Users

If you are an advanced user and know how to access the extended ROM of your device then this section will inform you how to install remotePROTECT automatically following a hard reset.

Copy the setupE file from \Program Files\remotePROTECT into the extended ROM, place the appropriate remotePROTECT.CAB (Pocket PC2003, Windows Mobile 5.0 or Smart Phone 5.0) file in the same directory (this is on the PC where the install took place C:\Program Files\sCPsOFT\remotePROTECT v1.5\<SP5 or WM5 or PPC2003> RemotePROTECT.XXX.CAB)

The setupE file contains your current SIM information (IMSI number) so after the reinstall will automatically look for that SIM in your device, if your device has been stolen , the SIM changed and then hard reset then you are still protected and the device will automatically LOCK and send a SMS to the predefined number.

The setupE is encrypted and therefore is safe to keep on your PC for future use.